

JUMO GmbH & Co. KG

Delivery address: Mackenrodtstraße 14,
36039 Fulda, Germany
Postal address: 36035 Fulda, Germany
Phone: +49 661 6003-0
Fax: +49 661 6003-607
E-mail: mail@jumo.net
Internet: www.jumo.net

JUMO Instrument Co. Ltd.

JUMO House
Temple Bank, Riverway
Harlow - Essex CM20 2DY, UK
Phone: +44 1279 63 55 33
Fax: +44 1279 63 52 62
E-mail: sales@jumo.co.uk
Internet: www.jumo.co.uk

JUMO Process Control, Inc.

8 Technology Boulevard
Canastota, NY 13032, USA
Phone: 315-697-JUMO
1-800-554-JUMO
Fax: 315-697-5867
E-mail: info@jumo.us
Internet: www.jumo.us



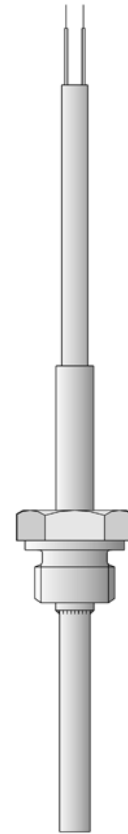
Screw-in RTD temperature probes with connecting cable

- for temperatures from -50 to +400°C
- as single or twin RTD temperature probe
- in 2-wire, 3-wire or 4-wire circuit
- connecting cable in PVC, silicone, PTFE or with metal braiding

Screw-in RTD temperature probes are mainly used for measuring temperatures in liquids and gases. An important selection criterion is their reliable sealing against both negative and positive pressures. Applications include HVAC, refrigeration, heating installations, ovens, furnaces and plant engineering.

Depending on the version, the connecting cables are suitable for use in dry and humid areas within the temperature range -50 to +350°C. The junction between cable and protection tube incorporates strain relief. A cable protector can be supplied as an option.

The measuring insert is normally fitted with a Pt100 temperature sensor to EN 60 751, Class B in 2-wire circuit. Versions with Pt500 or Pt1000 are also available. In addition, there is a choice of 3-wire or 4-wire circuit connections.



Technical data

Connection**Connecting cable****Process connection****Protection tube****Measuring insert****Response times****Accessories**

available with cable ends as: bare wires, with ferrules, receptacles or multipole connector
 PVC, ambient temperature -5 to +80°C (+105°C)
 silicone, ambient temperature -50 to +180°C
 PTFE, ambient temperature -190 to +260°C
 metal braiding, ambient temperature -50 to +350°C
 connecting cable can optionally be supplied with shielding
 thread, stainless steel 1.4571
 stainless steel 1.4571 (Type 902050/30 Inconel 2.4816), 5mm, 5.4mm, 6mm and 8mm dia.
 Pt100 temperature sensor, EN 60 751, Cl. B, 2-wire circuit
 $t_{0.5}$ approx. 2sec, $t_{0.9}$ approx. 6sec, in water 0.2m/sec, 6mm dia.
 pocket, see Data Sheet 90.9721 and 90.2440

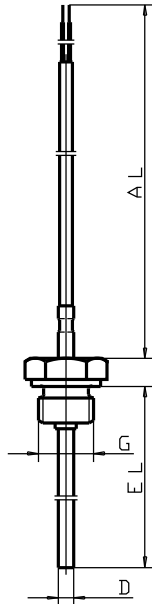
JUMO GmbH & Co. KG
 Delivery address: Mackenrodtstraße 14,
 36039 Fulda, Germany
 Postal address: 36035 Fulda, Germany
 Phone: +49 661 6003-0
 Fax: +49 661 6003-607
 E-mail: mail@jumo.net
 Internet: www.jumo.net

JUMO Instrument Co. Ltd.
 JUMO House
 Temple Bank, Riverway
 Harlow - Essex CM20 2DY, UK
 Phone: +44 1279 63 55 33
 Fax: +44 1279 63 52 62
 E-mail: sales@jumo.co.uk
 Internet: www.jumo.co.uk

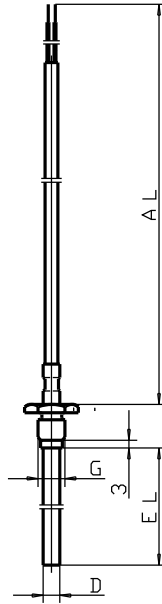
JUMO Process Control, Inc.
 8 Technology Boulevard
 Canastota, NY 13032, USA
 Phone: 315-697-JUMO
 1-800-554-JUMO
 Fax: 315-697-5867
 E-mail: info@jumo.us
 Internet: www.jumo.us



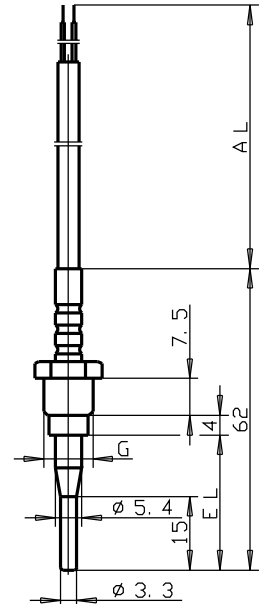
Dimensions



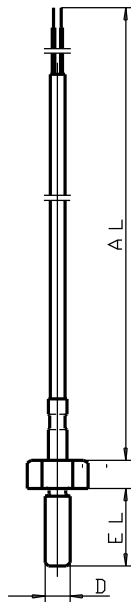
Type 902050/10



Type 902050/20



Type 902050/30



Type 902050/40

JUMO GmbH & Co. KG
 Delivery address: Mackenrodtstraße 14,
 36039 Fulda, Germany
 Postal address: 36035 Fulda, Germany
 Phone: +49 661 6003-0
 Fax: +49 661 6003-607
 E-mail: mail@jumo.net
 Internet: www.jumo.net

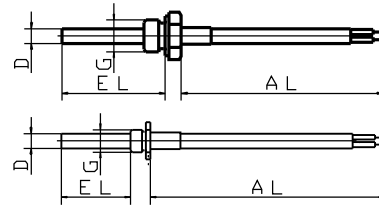
JUMO Instrument Co. Ltd.
 JUMO House
 Temple Bank, Riverway
 Harlow - Essex CM20 2DY, UK
 Phone: +44 1279 63 55 33
 Fax: +44 1279 63 52 62
 E-mail: sales@jumo.co.uk
 Internet: www.jumo.co.uk

JUMO Process Control, Inc.
 8 Technology Boulevard
 Canastota, NY 13032, USA
 Phone: 315-697-JUMO
 1-800-554-JUMO
 Fax: 315-697-5867
 E-mail: info@jumo.us
 Internet: www.jumo.us



Order details: Screw-in RTD temperature probes with connecting cable

(1) Basic version	
902050/10	Screw-in RTD temperature probe with fixed screw fitting
902050/20	Screw-in RTD temperature probe with loose screw fitting
(2) Operating temperature in °C / connecting cable	
x x	130 -200 to +400°C / metal braiding
x x	380 -50 to +200°C / silicone
x x	386 -50 to +260°C / PTFE
x x	402 -50 to +400°C / metal braiding
x x	724 -5 to +80°C / PVC
x x	912 5 to 105°C / PVC (only with 1 x 2-wire or 3-wire circuit)
(3) Measuring insert	
x x	1001 1 x Pt100 in 3-wire circuit
x x	1003 1 x Pt100 in 2-wire circuit
x x	1011 1 x Pt100 in 4-wire circuit
x x	2001 2 x Pt100 in 3-wire circuit
x x	2003 2 x Pt100 in 2-wire circuit
(4) Tolerance class to EN 60 751	
x x	1 Class B (standard)
x x	2 Class A
(5) Protection tube diameter D in mm	
x x	5 5mm
x x	6 6mm
(6) Fitting length EL in mm (50 ≤ EL ≤ 500)	
x	17 17mm
x	37 37mm
x x	50 50mm
x x	100 100mm
x x	137 137mm
x x	200 200mm
x	250 250mm
x x	... please specify in plain text (50mm steps)
(7) Process connection	
x	102 thread 1/4" pipe
x	104 thread 1/2" pipe
x	114 thread M 10 x 1
(8) Connecting cable end	
x x	03 bare cable ends
x x	11 ferrules to DIN 46 228 Part 4 (standard)
x x	13 receptacle 6.3 to DIN 46 247
x x	80 multipole connector (please specify type in plain text)
x x	99 to customer specification
(9) Connecting cable length AL in mm (500 ≤ AL ≤ 500000)	
x x	2500 2500mm
x x	... please specify in plain text (500mm steps)
(10) Extra codes	
x x	000 no extra code
x x	310 stepped protection tube
x x	315 cable protector: coil
x x	316 cable protector: tube
x x	317 shielded connecting cable



Order code (1) (2) (3) (4) (5) (6) (7) (8) (9) (10) ...
 - - - - - - - - / ...
Order example 902050/10 - 380 - 1001 - 1 - 6 - 100 - 104 - 11 - 2500 / 000¹

1. List extra codes in sequence, separated by commas.

JUMO GmbH & Co. KG
 Delivery address: Mackenrodtstraße 14,
 36039 Fulda, Germany
 Postal address: 36035 Fulda, Germany
 Phone: +49 661 6003-0
 Fax: +49 661 6003-607
 E-mail: mail@jumo.net
 Internet: www.jumo.net

JUMO Instrument Co. Ltd.
 JUMO House
 Temple Bank, Riverway
 Harlow - Essex CM20 2DY, UK
 Phone: +44 1279 63 55 33
 Fax: +44 1279 63 52 62
 E-mail: sales@jumo.co.uk
 Internet: www.jumo.co.uk

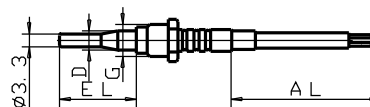
JUMO Process Control, Inc.
 8 Technology Boulevard
 Canastota, NY 13032, USA
 Phone: 315-697-JUMO
 1-800-554-JUMO
 Fax: 315-697-5867
 E-mail: info@jumo.us
 Internet: www.jumo.us



Order details: Screw-in RTD temperature probes with connecting cable

(1) Basic version

902050/30 Screw-in RTD temperature probe with loose screw fitting and stepped protection tube



		(2) Operating temperature in °C / connecting cable
x	380	-50 to +200°C / silicone
		(3) Measuring insert
x	1001	1 x Pt100 in 3-wire circuit
x	1003	1 x Pt100 in 2-wire circuit
		(4) Tolerance class to EN 60 751
x	1	Class B (standard)
x	2	Class A
		(5) Protection tube diameter D in mm
x	5.4	5.4mm dia. stepped down to 3.3mm
		(6) Fitting length EL in mm
x	27.5	27.5mm
		(7) Process connection
x	114	thread M 10 x 1
		(8) Connecting cable end
x	03	bare cable ends
x	11	ferrules to DIN 46 228 Part 4 (standard)
x	13	receptacle 6.3 to DIN 46 247
x	80	multipole connector (please specify type in plain text)
x	99	to customer specification
		(9) Connecting cable length AL in mm (500 ≤ AL ≤ 500000)
x	2500	2500mm
x	...	please specify in plain text (500mm steps)
		(10) Extra codes
x	000	no extra code
x	315	cable protector: coil
x	316	cable protector: tube
x	317	shielded connecting cable

Order code (1) - (2) - (3) - (4) - (5) - (6) - (7) - (8) - (9) / (10) ,...

Order example 902050/30 - 380 - 1003 - 1 - 5.4 - 27.5 - 114 - 11 - 2500 / 000¹

1. List extra codes in sequence, separated by commas.

JUMO GmbH & Co. KG
 Delivery address: Mackenrodtstraße 14,
 36039 Fulda, Germany
 Postal address: 36035 Fulda, Germany
 Phone: +49 661 6003-0
 Fax: +49 661 6003-607
 E-mail: mail@jumo.net
 Internet: www.jumo.net

JUMO Instrument Co. Ltd.
 JUMO House
 Temple Bank, Riverway
 Harlow - Essex CM20 2DY, UK
 Phone: +44 1279 63 55 33
 Fax: +44 1279 63 52 62
 E-mail: sales@jumo.co.uk
 Internet: www.jumo.co.uk

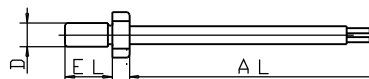
JUMO Process Control, Inc.
 8 Technology Boulevard
 Canastota, NY 13032, USA
 Phone: 315-697-JUMO
 1-800-554-JUMO
 Fax: 315-697-5867
 E-mail: info@jumo.us
 Internet: www.jumo.us



Order details: Screw-in RTD temperature probes with connecting cable

(1) Basic version

902050/40 Screw-in RTD temperature probe, screw-in protection tube



(2) Operating temperature in °C / connecting cable

- x 380 -50 to +200°C / silicone
- x 390 -50 to +300°C / metal braiding
- x 724 -5 to +80°C / PVC
- x 912 5 to 105°C / PVC (only with 1 x 2-wire or 3-wire circuit)

(3) Measuring insert

- x 1001 1 x Pt100 in 3-wire circuit
- x 1003 1 x Pt100 in 2-wire circuit

(4) Tolerance class to EN 60 751

- x 1 Class B (standard)
- x 2 Class A

(5) Protection tube diameter D in mm

- x 8 M 8

(6) Fitting length EL in mm

- x 25 25mm

(7) Process connection

- x 111 thread M 8

(8) Connecting cable end

- x 03 bare cable ends
- x 11 ferrules to DIN 46 228 Part 4 (standard)
- x 13 receptacle 6.3 to DIN 46 247
- x 80 multipole connector (please specify type in plain text)
- x 99 to customer specification

(9) Connecting cable length AL in mm (500 ≤ AL ≤ 500000)

- x 2500 2500mm
- x ... please specify in plain text (500mm steps)

(10) Extra codes

- x 000 no extra code
- x 315 cable protector: coil
- x 316 cable protector: tube
- x 317 shielded connecting cable

Order code (1) - (2) - (3) - (4) - (5) - (6) - (7) - (8) - (9) / (10) ,....

Order example 902050/40 - 390 - 1003 - 1 - 8 - 25 - 111 - 11 - 2500 / 000¹

1. List extra codes in sequence, separated by commas.

Stock versions:

(1)	(2)	(3)	(4)	(5)	(6)	(7)	(8)	(9)	(10)	Sales No.
902050/10	- 380	- 1001	- 1	- 6	- 100	- 104	- 11	- 2500	/ 316	90/00065232
902050/10	- 380	- 1001	- 1	- 6	- 250	- 104	- 11	- 2500	/ 316	90/00065235
902050/20	- 130	- 1003	- 1	- 6	- 37	- 114	- 11	- 2500	/ 315,317	90/00055644
902050/20	- 130	- 1001	- 1	- 6	- 37	- 114	- 11	- 2500	/ 315,317	90/00055646
902050/30	- 380	- 1001	- 1	- 5.4	- 27.5	- 114	- 11	- 2500	/ 316	90/00089972
902050/40	- 390	- 1003	- 1	- 8	- 25	- 111	- 11	- 2500	/ 315,317	90/00055722
902050/40	- 390	- 1001	- 1	- 8	- 25	- 111	- 11	- 2500	/ 315,317	90/00055732